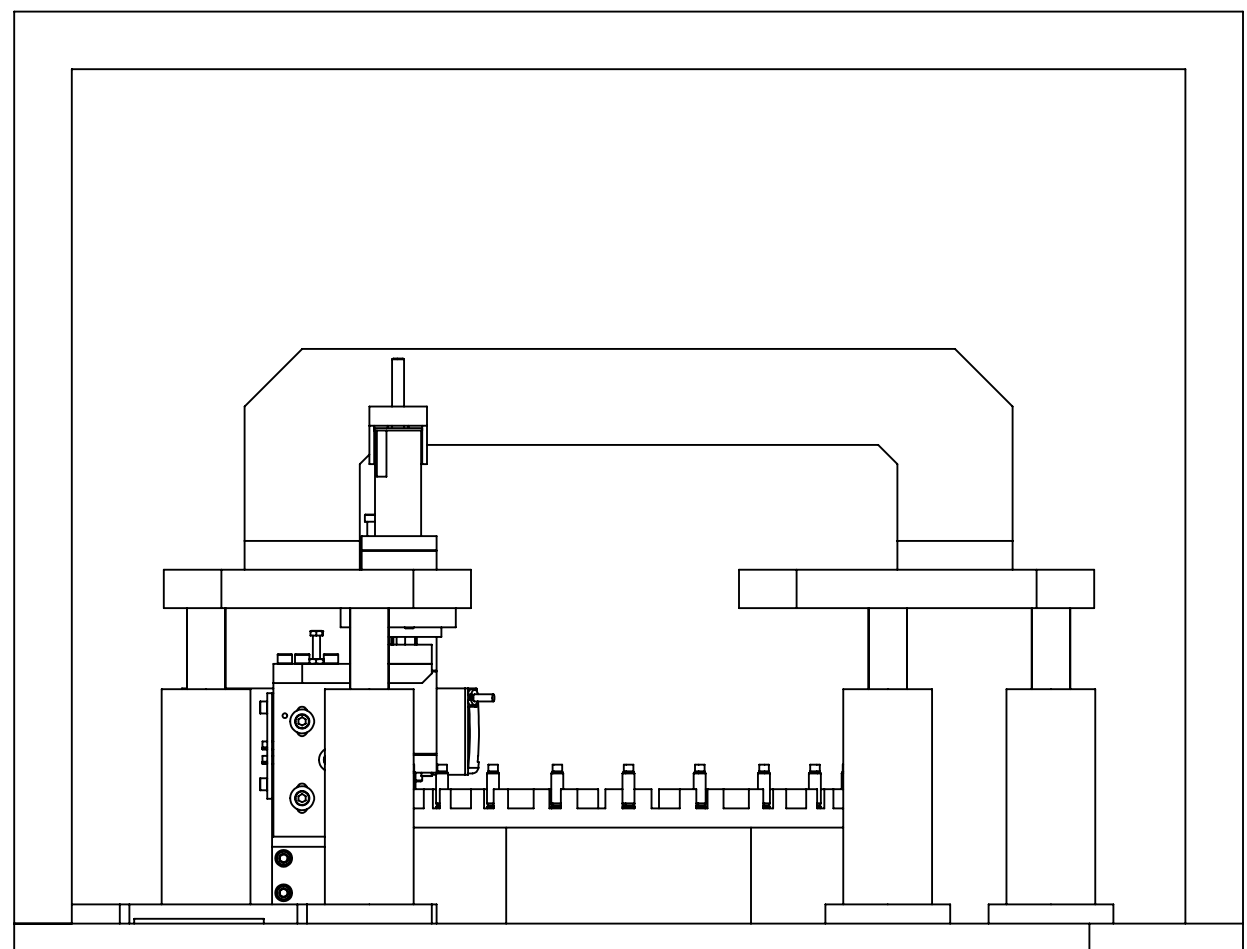
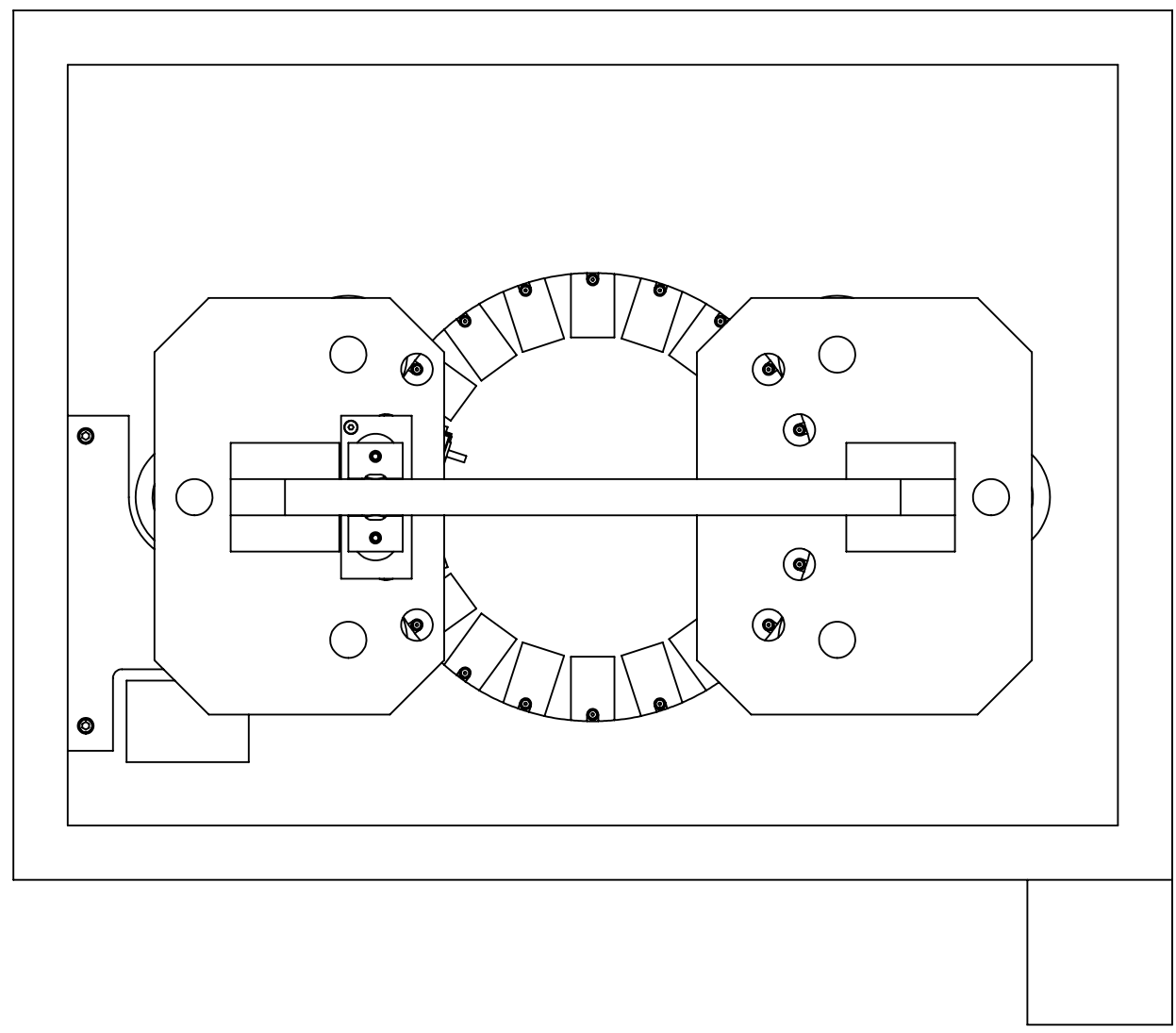


B.O.M.

ITEM NO.	PART NUMBER	DESCRIPTION	Material	M/B	QTY.	Vendor	Rev
1	0830 10 101	CRIMP TOOL	AISI Type A2 Tool Steel	MAKE	8		00
2	0830 10 102	BODY	4140 PH	MAKE	1		00
3	0830 10 103	BALL RETURN	Delrin BLK	MAKE	1		00
4	0830 10 104	GUIDE, TURRET	4140 PH	MAKE	1		00
5	0830 10 105	CLIP	4140 PH	MAKE	1		00
6	0830 10 106	STOP	4140 PH	MAKE	1		00
7	0830 10 107	MOUNT	4140 PH	MAKE	1		00
8	0830 10 108	CAM	AISI Type A2 Tool Steel	MAKE	1		00
9	0830 10 109	CLAMP	4140 PH	MAKE	1		00
10	0830 10 110	CLAMP 2	4140 PH	MAKE	1		00
11	0830 10 111	BEARING	n-a	MAKE FROM	1	McMaster	00
12	0830 10 112	BEARING 2	n-a	MAKE FROM	1	McMaster	00
13	0830 10 113	SP GUIDE	4140 PH	MAKE	1		00
14	0830 10 114	SP GUIDE 2	4140 PH	MAKE	1		00
15	0830 10 115	SP CAP	4140 PH	MAKE	2		00
16	0830 20 101	BASE	4140 PH	MAKE	1		00
17	0830 20 102	MOUNT	4140 PH	MAKE	1		00
18	0830 20 103	DEPTH STOP	4140 PH	MAKE	1		00
19	0830 20 104	RISER	4140 PH	MAKE	1		00
20	0830 20 105	SLIDE	4140 PH	MAKE	1		00
21	0830 20 107	SP PLATE	4140 PH	MAKE	1		00
22	90480A195	10-32 NUT	n-a	BUY	1	McMaster	00
23	91251A203	8-32 x 1.5 SHCS	n-a	BUY	8	McMaster	00
24	91251A299	5/16-18 x 1 5/8 SHCS	n-a	BUY	2	McMaster	00
25	91251A342	10-32 X 1/2 SHCS	n-a	BUY	2	McMaster	00
26	91251A344	10-32 X 5/8" SHCS	n-a	BUY	1	McMaster	00
27	91251A349	10-32 x 1.25 SHCS	n-a	BUY	4	McMaster	00
28	91251A537	1/4"-20 x 1/2 SHCS	n-a	BUY	1	McMaster	00
29	91251A539	1/4-20 x 5/8 SHCS	n-a	BUY	1	McMaster	00
30	91251A542	1/4-20 x 1" SHCS	n-a	BUY	8	McMaster	00
31	91251A544	1/4"-20 x 1-1.4 SHCS	n-a	BUY	4	McMaster	00
32	91251A548	1/4"-20 x 1-3/4 SHCS	n-a	BUY	2	McMaster	00
33	91259A540	1/4 x 3/4 Shoulder Screw	---	BUY	1	McMaster	00
34	91375A608	5-16 x 24 SHCS	n-a	BUY	2	McMaster	00
35	92314A836	10-32 x 1.5 HEX SS	n-a	BUY	1	McMaster	00
36	9434K23	Spring	n-a	BUY	4	McMaster	00
37	9528K58	STEEL BALL 3/8	n-a	BUY	8	McMaster	00
38	9573K69	Spring	n-a	BUY	2	McMaster	00
39	9657K333	Spring	n-a	BUY	2	McMaster	00
40	9657K633	Spring	n-a	BUY	2	McMaster	00
41	98023A029	1/4 WASHER	---	BUY	3	McMaster	00
42	98381A507	3/16 x 5/8 Dowel Pin	n-a	BUY	4	McMaster	00
43	0830 99 101	Alignment Pin	4140 PH	MAKE	1		00



QTY: 1

NOTE:
A: ALL DIMENSION TOLERANCES APPLY AFTER PARTS FINISH
B: ALL THREADS TO BE PROTECTED FROM COATINGS

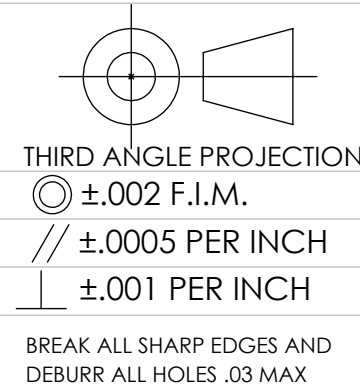
PROPRIETARY AND CONFIDENTIAL

THE INFORMATION CONTAINED IN THIS DRAWING IS THE SOLE PROPERTY OF D&M HOLDING COMPANY. ANY REPRODUCTION IN PART OR AS A WHOLE WITHOUT THE WRITTEN PERMISSION OF D&M HOLDING COMPANY IS PROHIBITED.

ALL DRAWINGS AND PRINTS, WHETHER IN PRINTED OR ELECTRONIC FORMAT, MAY ONLY BE USED FOR THE PURPOSE FOR WHICH PERMISSION TO USE WAS GRANTED.

THIS DOCUMENT MAY CONTAIN TECHNOLOGY OR TECHNICAL DATA, THE USE OF WHICH IS RESTRICTED BY THE U.S. ARMS EXPORT CONTROL ACT. THIS DATA IS SUBJECT TO THE LIMITATIONS SPECIFIED IN THE INTERNATIONAL TRAFFIC IN ARMS REGULATIONS (ITAR), BY ACCEPTING THIS DATA, THE RECIPIENT AGREES TO HONOR THE REQUIREMENTS OF THE ITAR.

THE INFORMATION ON THIS DOCUMENT MAY NOT BE TRANSFERRED TO ANY OTHER COUNTRY, OR TO A NATIONAL OF ANY OTHER COUNTRY, OR OTHERWISE BE DISPOSED OF IN ANY OTHER COUNTRY, EITHER IN THEIR ORIGINAL FORM OR AFTER BEING INCORPORATED INTO OTHER END-ITEMS IS PROHIBITED BY FEDERAL LAW.



UNLESS OTHERWISE SPECIFIED: DIMENSIONS ARE IN INCHES TOLERANCES: FRACTIONAL ± 1/64 ANGULAR: MACH ± .5 BEND ± 1 ONE PLACE DECIMAL ± .05 TWO PLACE DECIMAL ± .01 THREE PLACE DECIMAL ± .005 FOUR PLACE DECIMAL ± .0005	NAME Cholke	DATE 01/15/2024
MATERIAL n/a	CHECKED	
FINISH √ U.O.S.	ENG APPR.	
DO NOT SCALE DRAWING	MFG APPR.	
	Q.A.	
	COMMENTS:	

D&M Holding Company

TITLE: **CRIMP TOOL ASSY**

SIZE DWG. NO. **0830 00 001** REV **00**

SCALE: 1:5 WEIGHT: SHEET 1 OF 3

4

3

2

1

D

D

C

C

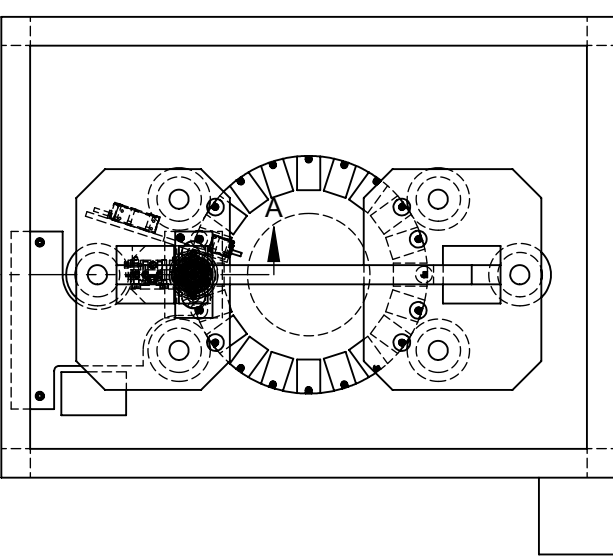
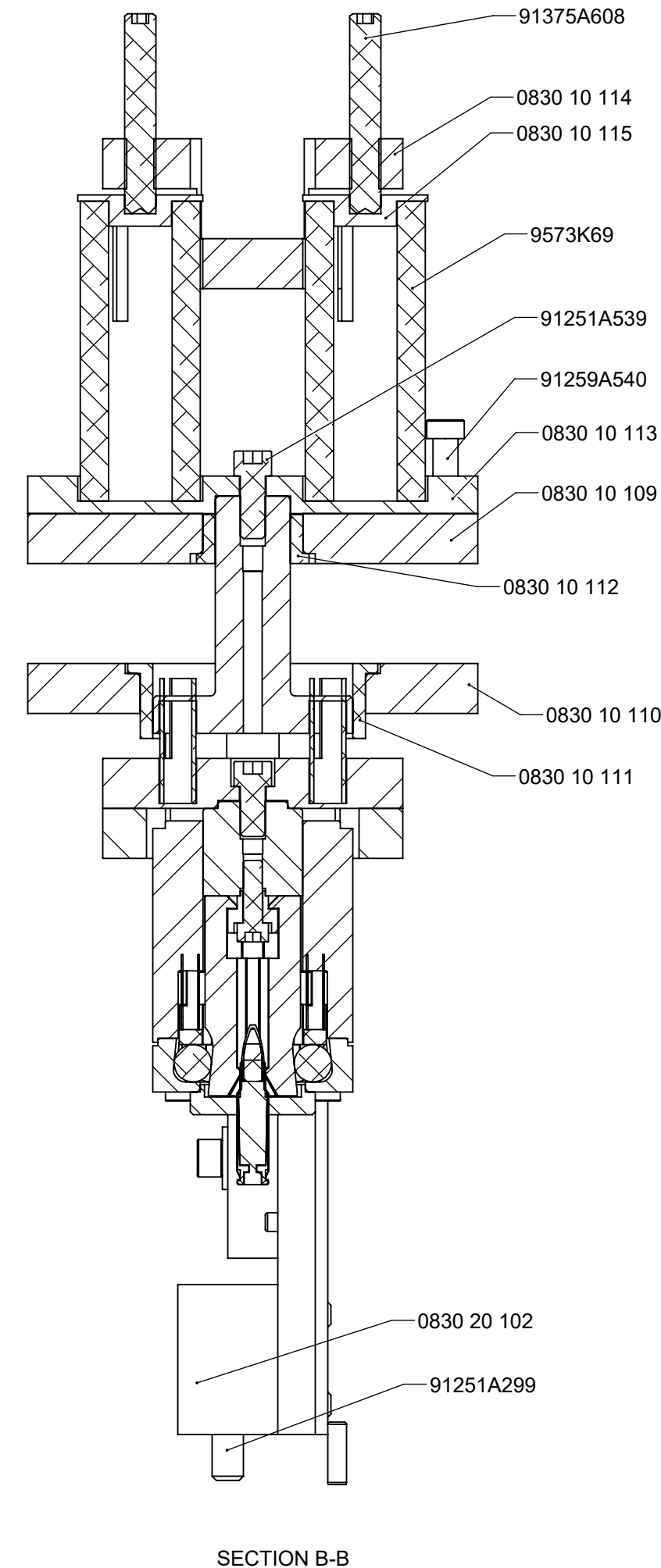
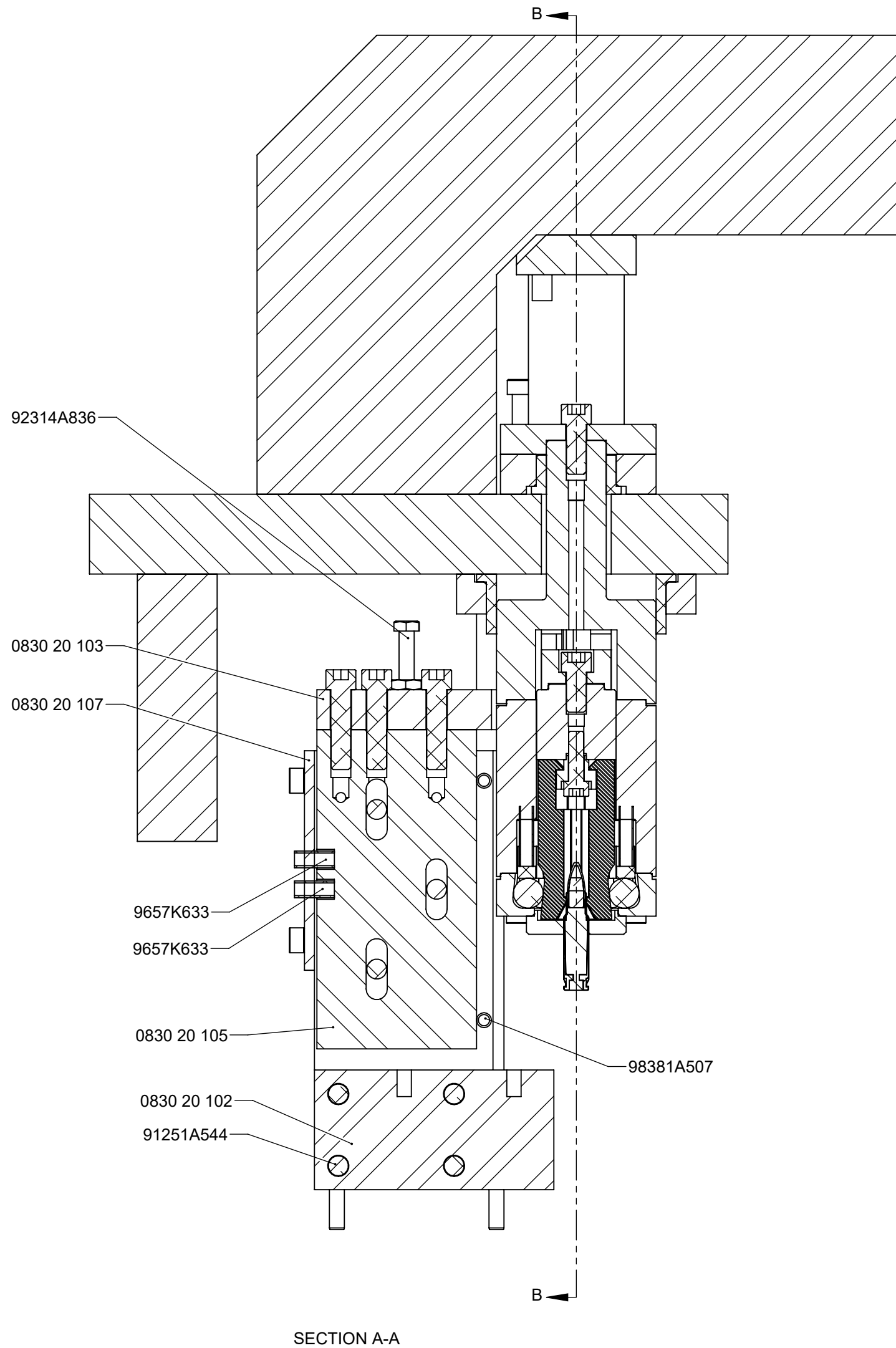
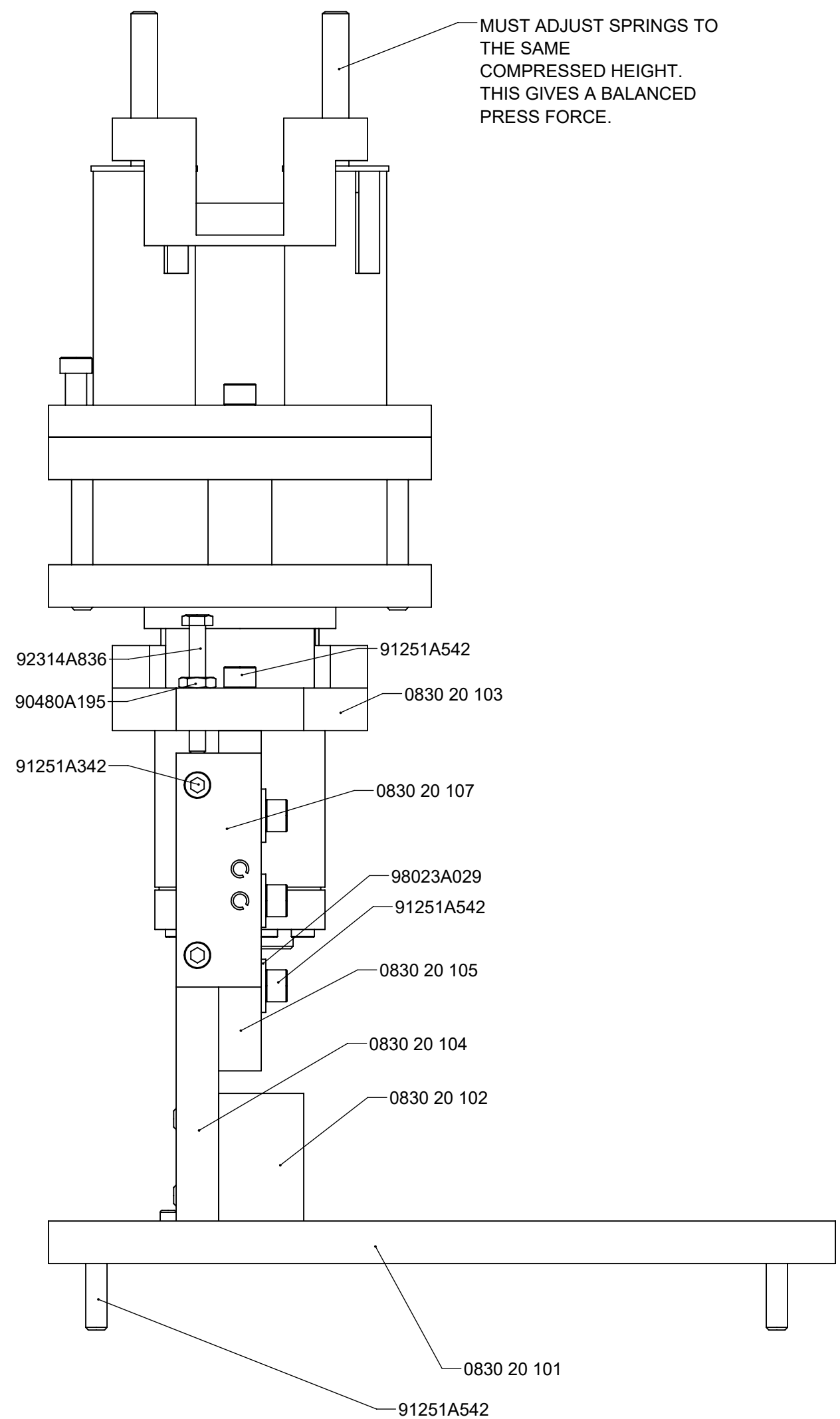
B

B

A

A

MUST ADJUST SPRINGS TO THE SAME COMPRESSED HEIGHT. THIS GIVES A BALANCED PRESS FORCE.



NOTE:
A: ALL DIMENSION TOLERANCES APPLY AFTER PARTS FINISH
B: ALL THREADS TO BE PROTECTED FROM COATINGS

PROPRIETARY AND CONFIDENTIAL

THE INFORMATION CONTAINED IN THIS DRAWING IS THE SOLE PROPERTY OF D&M HOLDING COMPANY. ANY REPRODUCTION IN PART OR AS A WHOLE WITHOUT THE WRITTEN PERMISSION OF D&M HOLDING COMPANY IS PROHIBITED.

ALL DRAWINGS AND PRINTS, WHETHER IN PRINTED OR ELECTRONIC FORMAT, MAY ONLY BE USED FOR THE PURPOSE FOR WHICH PERMISSION TO USE WAS GRANTED.

THIS DOCUMENT MAY CONTAIN TECHNOLOGY OR TECHNICAL DATA, THE USE OF WHICH IS RESTRICTED BY THE U.S. ARMS EXPORT CONTROL ACT. THIS DATA IS SUBJECT TO THE LIMITATIONS SPECIFIED IN THE INTERNATIONAL TRAFFIC IN ARMS REGULATIONS (ITAR). BY ACCEPTING THIS DATA, THE RECIPIENT AGREES TO HONOR THE REQUIREMENTS OF THE ITAR.

THE INFORMATION ON THIS DOCUMENT MAY NOT BE TRANSFERRED TO ANY OTHER COUNTRY, OR TO A NATIONAL OF ANY OTHER COUNTRY, OR OTHERWISE BE DISPOSED OF IN ANY OTHER COUNTRY, EITHER IN ORIGINAL FORM OR AFTER BEING INCORPORATED INTO OTHER END-ITEMS IS PROHIBITED BY FEDERAL LAW.

THIRD ANGLE PROJECTION
 Ⓞ ±.002 F.I.M.
 // ±.0005 PER INCH
 ⊥ ±.001 PER INCH
 BREAK ALL SHARP EDGES AND DEBURR ALL HOLES .03 MAX

UNLESS OTHERWISE SPECIFIED:
 DIMENSIONS ARE IN INCHES
 TOLERANCES: FRACTIONAL ±1/64
 ANGULAR: MACH ±.5 BEND ±1
 ONE PLACE DECIMAL ±.05
 TWO PLACE DECIMAL ±.01
 THREE PLACE DECIMAL ±.005
 FOUR PLACE DECIMAL ±.0005

MATERIAL: n/a
 FINISH: V.U.O.S.
 DO NOT SCALE DRAWING

NAME	DATE
DRAWN: Cholke	01/15/2024
CHECKED:	
ENG APPR.:	
MFG APPR.:	
Q.A.:	
COMMENTS:	

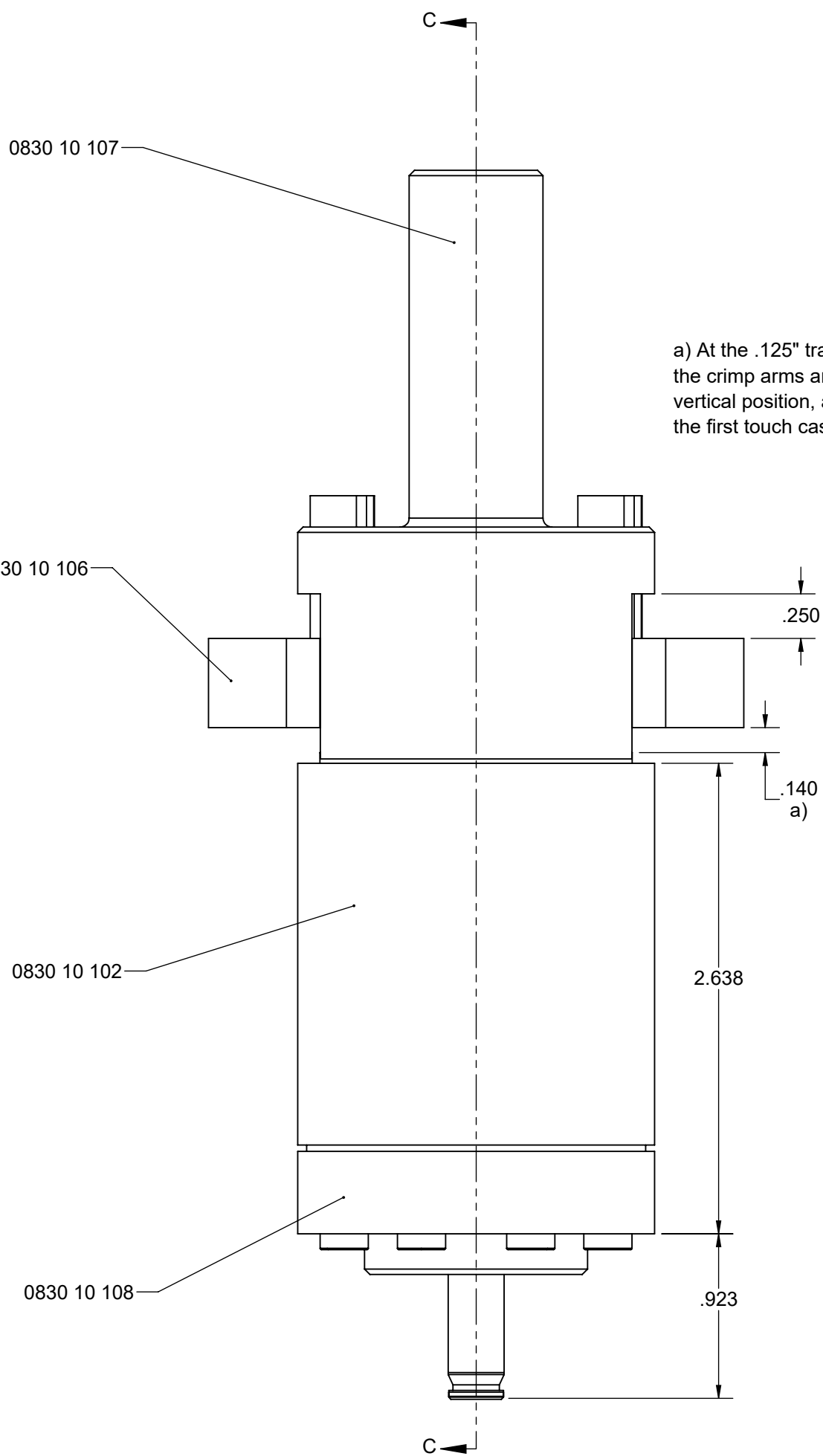
QTY: 1

D&M Holding Company

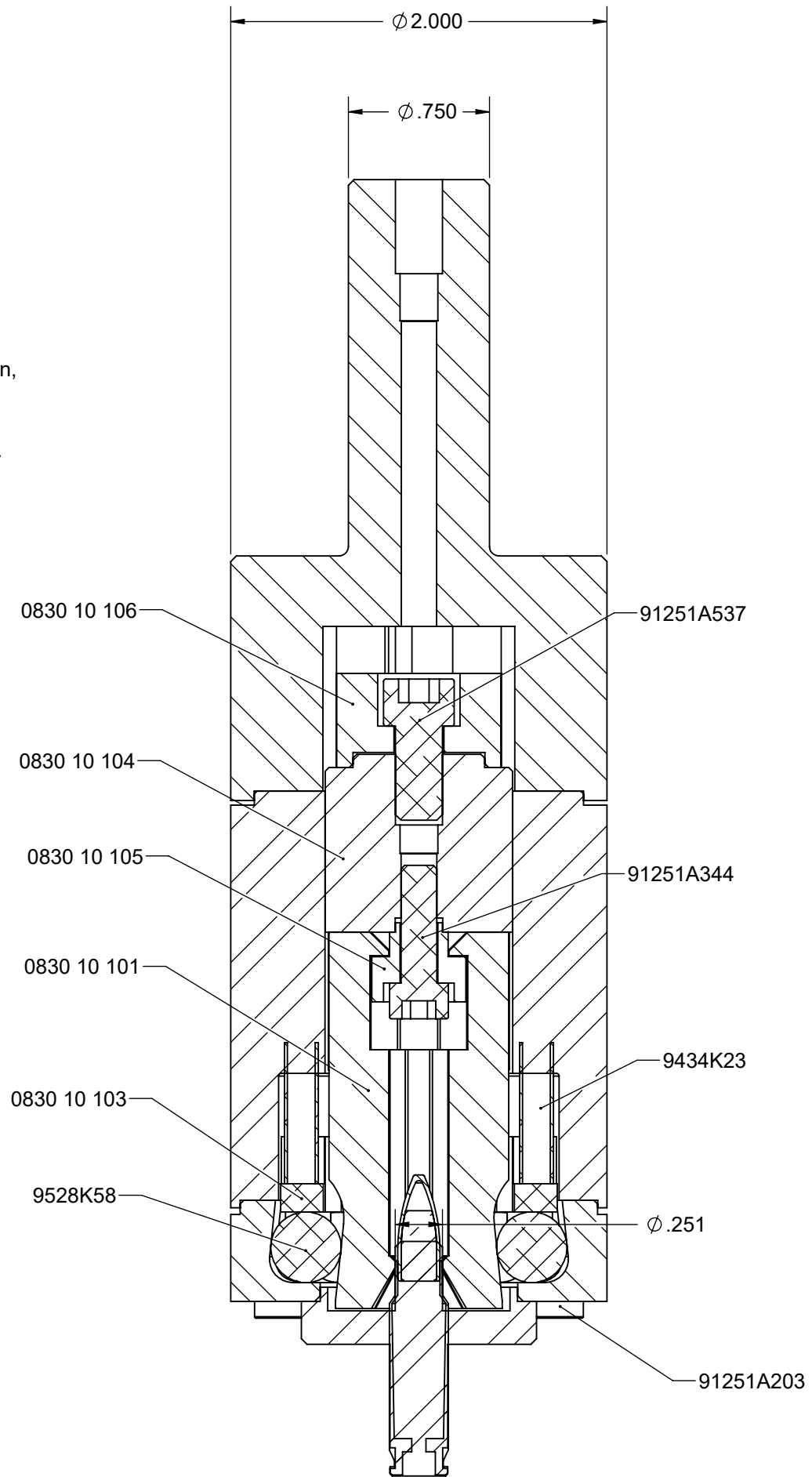
TITLE: **CRIMP TOOL ASSY**

SIZE DWG. NO. **0830 00 001** REV **00**

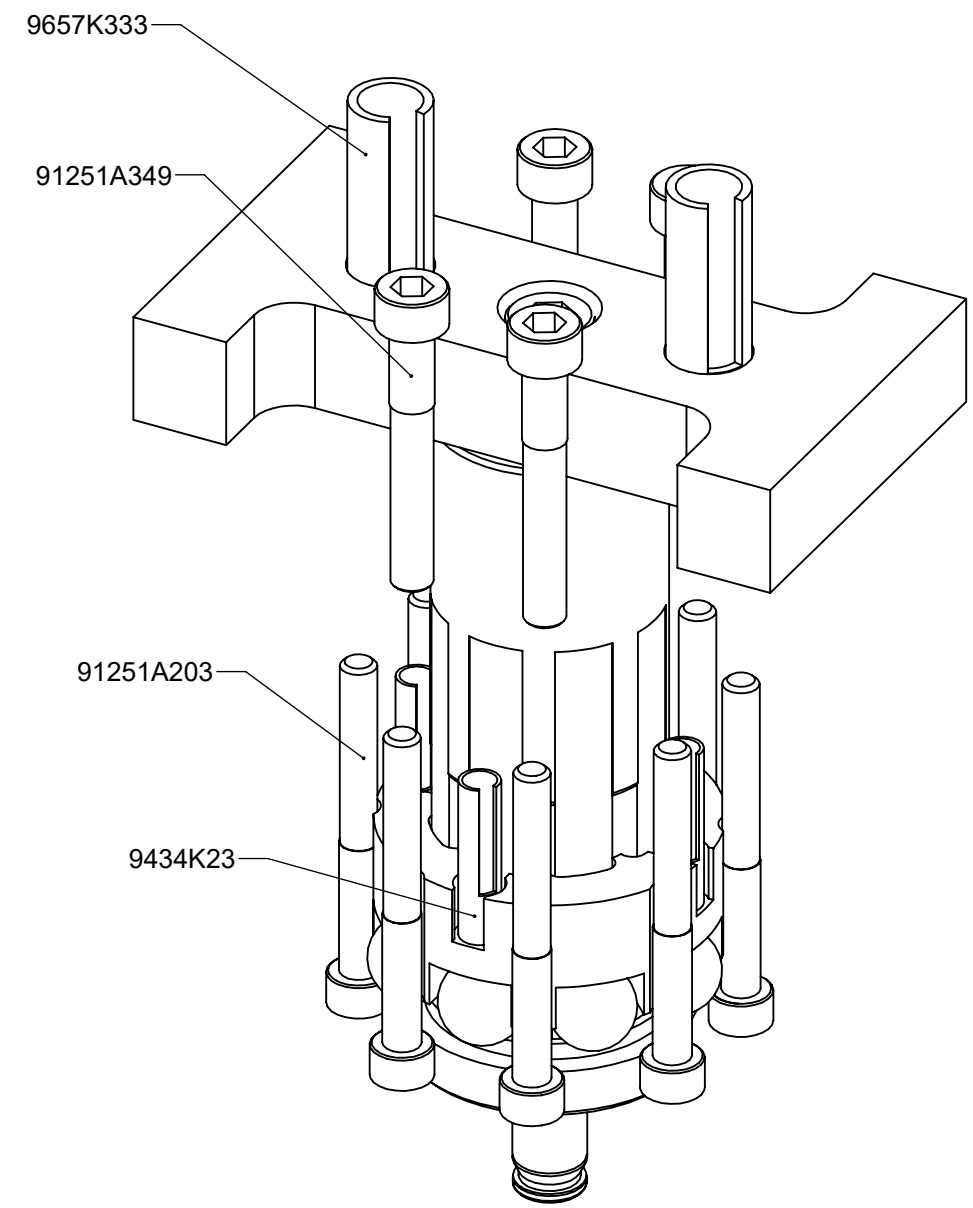
SCALE: 1:1.5 WEIGHT: SHEET 2 OF 3



a) At the .125" travel position, the crimp arms are at the vertical position, and the first touch case position.



SECTION C-C



NOTE:
 A: ALL DIMENSION TOLERANCES APPLY AFTER PARTS FINISH
 B: ALL THREADS TO BE PROTECTED FROM COATINGS

PROPRIETARY AND CONFIDENTIAL

THE INFORMATION CONTAINED IN THIS DRAWING IS THE SOLE PROPERTY OF D&M HOLDING COMPANY. ANY REPRODUCTION IN PART OR AS A WHOLE WITHOUT THE WRITTEN PERMISSION OF D&M HOLDING COMPANY IS PROHIBITED.

ALL DRAWINGS AND PRINTS, WHETHER IN PRINTED OR ELECTRONIC FORMAT, MAY ONLY BE USED FOR THE PURPOSE FOR WHICH PERMISSION TO USE WAS GRANTED.

THIS DOCUMENT MAY CONTAIN TECHNOLOGY OR TECHNICAL DATA, THE USE OF WHICH IS RESTRICTED BY THE U.S. ARMS EXPORT CONTROL ACT. THIS DATA IS SUBJECT TO THE LIMITATIONS SPECIFIED IN THE INTERNATIONAL TRAFFIC IN ARMS REGULATIONS (ITAR). BY ACCEPTING THIS DATA, THE RECIPIENT AGREES TO HONOR THE REQUIREMENTS OF THE ITAR.

THE INFORMATION ON THIS DOCUMENT MAY NOT BE TRANSFERRED TO ANY OTHER COUNTRY, OR TO A NATIONAL OF ANY OTHER COUNTRY, OR OTHERWISE BE DISPOSED OF IN ANY OTHER COUNTRY, EITHER IN THEIR ORIGINAL FORM OR AFTER BEING INCORPORATED INTO OTHER END-ITEMS IS PROHIBITED BY FEDERAL LAW.

THIRD ANGLE PROJECTION

$\pm .002$ F.I.M.

$\pm .0005$ PER INCH

$\pm .001$ PER INCH

BREAK ALL SHARP EDGES AND DEBURR ALL HOLES .03 MAX

UNLESS OTHERWISE SPECIFIED:		NAME	DATE
DIMENSIONS ARE IN INCHES		DRAWN	Cholke 01/15/2024
TOLERANCES: FRACTIONAL $\pm 1/64$		CHECKED	
ANGULAR: MACH $\pm .5$ BEND ± 1		ENG APPR.	
ONE PLACE DECIMAL $\pm .05$		MFG APPR.	
TWO PLACE DECIMAL $\pm .01$		Q.A.	
THREE PLACE DECIMAL $\pm .005$		COMMENTS:	
FOUR PLACE DECIMAL $\pm .0005$			
MATERIAL	n/a		
FINISH	U.O.S.		
DO NOT SCALE DRAWING			

D&M Holding Company

TITLE: **CRIMP TOOL ASSY**

SIZE DWG. NO. **0830 00 001** REV **00**

SCALE: 1.25:1 WEIGHT: SHEET 3 OF 3